

IMAGE GRAVURES
PRECISION DELIVERED

enfolding a
futuristic approach

The efficacy
of an
establishment
lies in its roots
and its wings,
roots so deep
and wings so
curious to fly
high

the company

The moral standards are best echoed in a strongly held origin with flawlessly and maturely embraced accomplishments. Image Gravures is a venture prevailing with its strategy of delivering precision through an amalgamation of erstwhile wisdom and contemporary technology.

“The result of high intention, sincere effort and skillfull execution is quality and precision”



The principles and ethics of Image Gravures apprise its success story

vision

We endeavour wholeheartedly and skillfully towards an exceptional benefaction globally through our products. We aim to be among the stalwarts of our business.

mission

The core perception of precision to be the only 'magic mantra' has given Image Gravures the stride towards provision of quality that is uncompromising. With our achievements and self experiences, we get an inspirational boost towards innovation in our products with the use of advanced technology.

the ideology

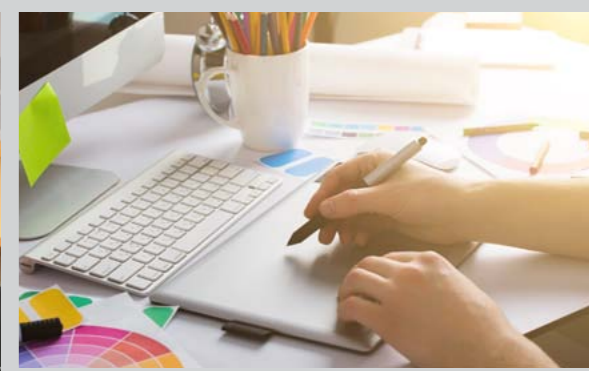
We strongly believe in the power of the Sanskrit numeric 'Shree Sava' that also adds to conceptualising the essence of Image Gravures. Interpreted as 1.25 in English, the philosophical approach behind this symbolic genre translates to ever-expanding growth of Image Gravures year in and year out. This escalation names to surplus avails and up-trending customer satisfaction. Traditionally, the significance is inspirational for Image Gravures in putting more efforts towards accelerating upwards thus benefitting the end users. Image Gravures has always believed and followed this concept and this can be well glimpsed in the approach as well as execution of Image Gravures.

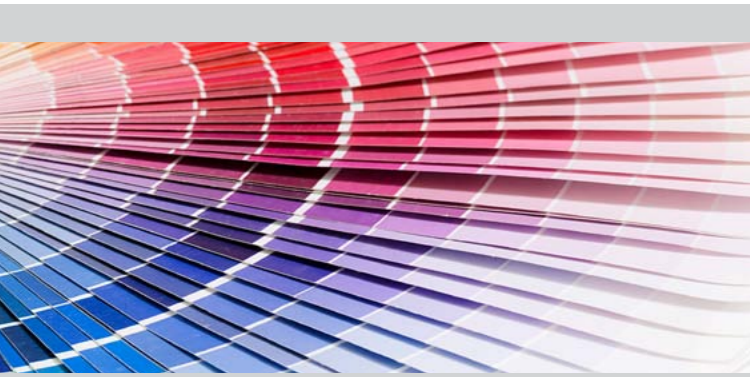
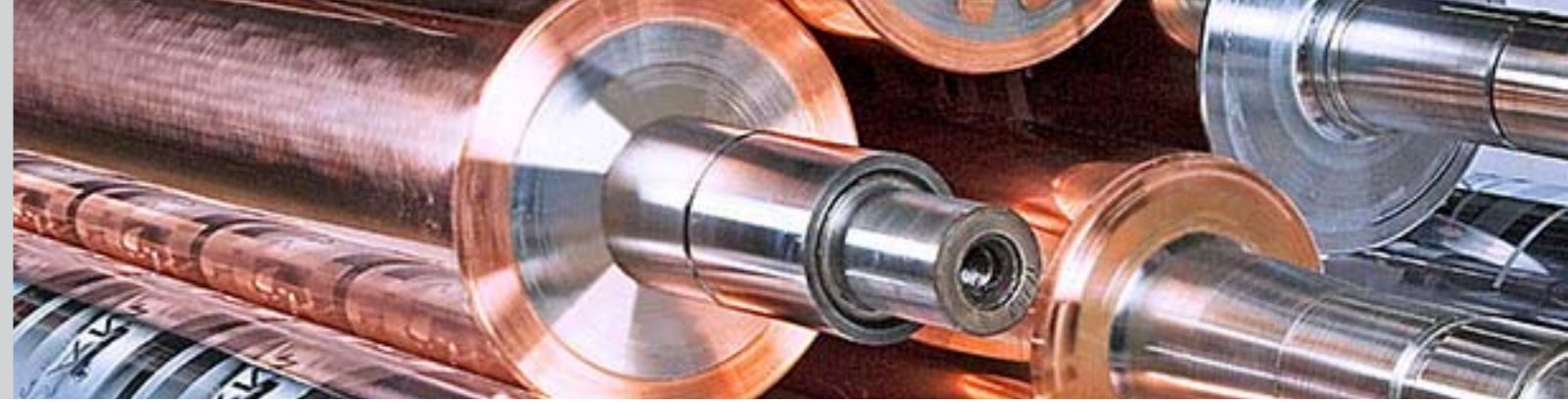


the provisions

Image Gravures leaves no stone unturned to stick to their commitment of providing services with quality and precision. The achievement of a milestone of Direct Laser is a benchmark in itself for Image Gravures. Adding one more feather to the hat is the facility and the provision of Repro services.

Image Gravures provides a total design solution taking from concept to printing where there is maintenance of precision and quality of the final outcome. Image Gravures offers a complete package as per client requirement which includes design, engraving, test run and final printing of the product. Every smallest of the technical hampering during the entire process is smartly taken care of at the Repro department. Image Gravures feels utmost proud in providing the Repro service and hopes to achieve more remarkable milestones.





gravurecylinders

Where we bear our expertise is the gravure cylinders. Image Gravures started its journey with the gravure cylinders. These are very precisely electronically engraved to give excellent outcomes especially in FMCG packaging. Though Image Gravures is gaining new heights, it has these cylinders contributing to make it what it is today.

applications

- Printing & Packaging
- Coating Applications

anilox cylinders

Image Gravures aims to strengthen growth and move ahead towards gaining significance internationally. Image Gravures welcomes the world to encourage its efforts and help escalate it worldwide.

Image Gravures serves with 2 pearls, the black and silver pearls, as in the ceramic and chrome anilox cylinders respectively. These cylinders are perfectly engraved to serve the printing as well as packaging industry.

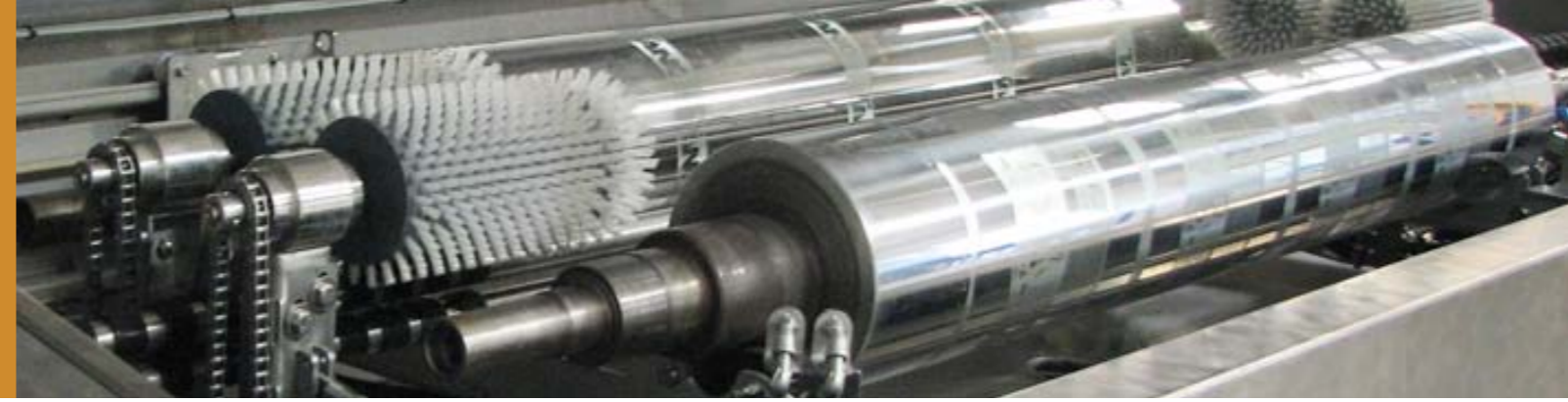
technology

- Direct Laser Engraving
- Electromechanical Engraving
- Mechanical Engraving



black pearl
ceramic anilox rolls

silver pearl
chrome anilox rolls



Ceramic Anilox Roller Applications

- Flexo Printing
- Film Coating Lines
- UV Printing
- Coating & Special Applications

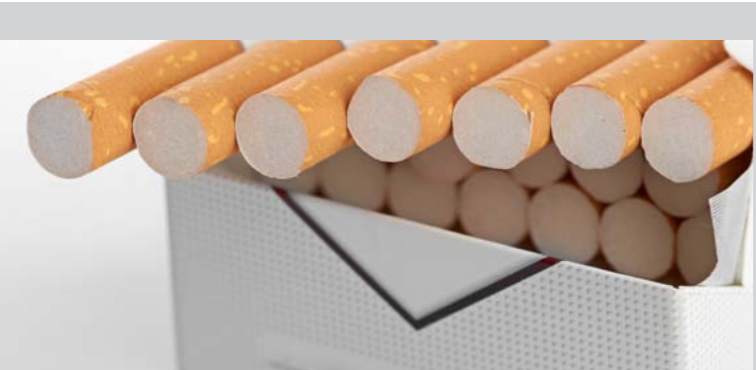
Chrome Anilox Roller Applications

- Printing & Packaging
- Film
- Lamination

features

- Hard-wearing Ceramic anilox rolls that is resistant to both scratches and scoring when in contact with steel doctor blades.
- A ceramic coating also increases its ability to resist corrosion.
- Direct Laser Engraving Technology allows for exceptional anilox cell engraving to give precise ink transfer.
- Highest screen resolution (LPI- Lines Per Inch) and Cell Volumes (BCM- Billion Cubic Micron). This ability enables printers to have an unlimited range of cell geometries to meet all graphic needs.





embossing cylinders

The dire necessity of DIRECT LASER for both printing and packaging is a spread word globally. Image Gravures takes utmost proud in being the first Indian company in utilization of this new technique of direct laser engraving in its embossing cylinders.

We are equipped with Twin Head Laser for engraving on Mild Steel, Copper, Brass, Aluminium, Ceramic, Ebonite and other material for different industrial applications.

technology

- Direct Laser Engraving
- CNC 3D Engraving

features

- Meticulously engraved
- Wear resistant
- Variable 2-D and 3-D embossing engraving
- Laser sharp line works

applications

- Male / female embossing rollers
- Rollers for cork tip & UV Ductile printing
- Embossing rollers for Tobacco, Figured Glass, Leather, PVC, Wedding Cards, Aluminium Foils, Lenticular Films, Security Printing, Ceramic Anilox Rollers, High GSM coating, etc.



IMAGE GRAVURES
PRECISION DELIVERED

Plot No.: 3212-13, Phase: III, G.I.D.C.
Chhatral: 382 729, Dist: Gandhinagar, India
+91 2764 233800, +91 2764 311263
info@imagegravures.com
www.imagegravures.com